

Sustainable by Design

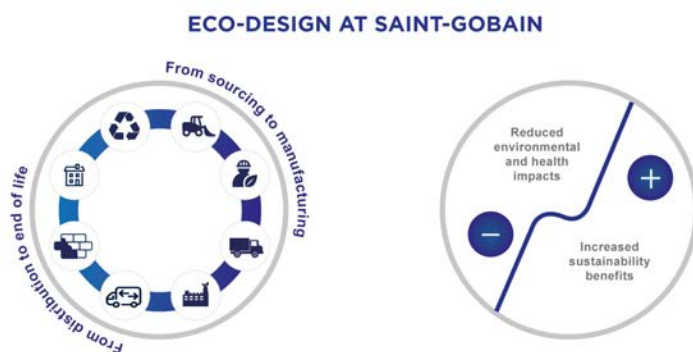
Solutions / Green & Sustainable / Sustainable by Design

Design today the sustainable mobility of tomorrow

Glass Design is not only a matter of beauty, it also plays a key role in sustainability. Today's trend is to increase glazing surfaces on the vehicle which comes along with thermal and weight issues. Through aerodynamics and mounting solutions such as extrusion, we reduce environmental impact.

Discover as well the integration of eco-design into our product development process.

Eco-design

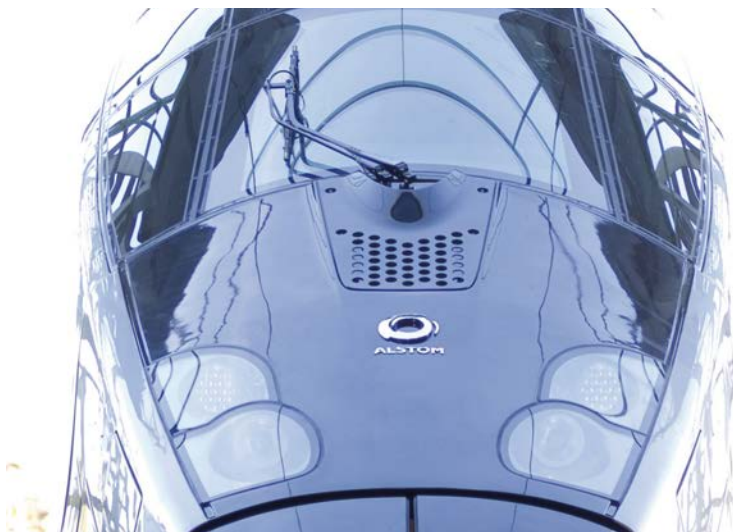


During the product design phase, Saint-Gobain Sekurit Transport evaluates the environmental impact of the product thanks to Life Cycle assessment. It's a decision-making phase where improvements are done in order to make sure that our products and processes are contributing to more a sustainable world.

Aerodynamic shape

Saint-Gobain Sekurit Transport conceives products that enhance aerodynamics: decrease fuel consumption while providing a wider range of travel.

Our shape and bending capacities allow us to create innovative solutions in order to reduce the coefficient of drag.



Extrusion

This technology, developed by Saint-Gobain Sekurit, consists of a rubber on the glass's perimeter that provides a seal between the window and the vehicle's body.

The extruded glass helps improve aesthetics, aerodynamics and acoustics. It also offers cost optimization at your plant: reduce tooling, glue and fixing time..



Looking for personalized information?

Our team is at your service to support you through every step of your project

[Contact Us](#)

A solution for every project:



Safety



**Green &
Sustainable**



**Driver & Passenger
Experience**