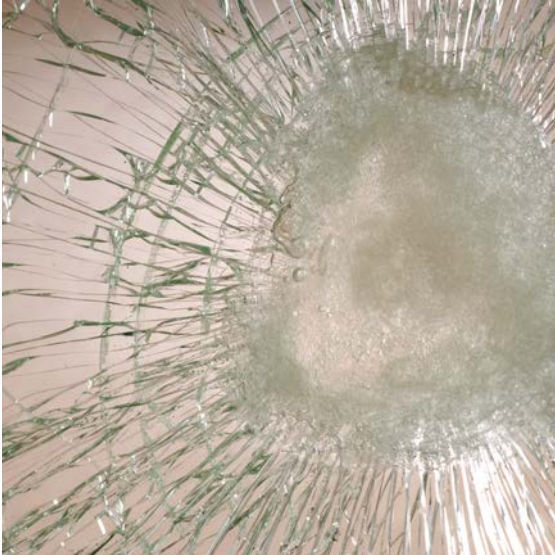




# Anti-Spall

Solutions / Safety / Anti-Spall



Protect the driver's from glass chips projection and projectiles intrusion into the cabin, with Anti-Spall layer on the windshield.

- ✔ Avoid glass projection in case of projectile intrusion
- ✔ Prevent driver's physical injuries
- ✔ Additional protection fixed on the inner face of the glass.

## Specific Markets



## Anti-Spall in details

Broken glass and spalls projection might be a significant threat to train drivers. In order to prevent physical injury, Saint-Gobain Sekurit Transport offers a solution of an antispall shielding: a transparent layer that retains glass shards caused by the intrusion of concrete or metallic impact. It is applied on the internal side of the windscreen in order to avoid the projection from glass fragments to the driver.

Our Antispall film is the perfect solution to High-Speed and Inter-city train: faster speed, stronger spall retention.

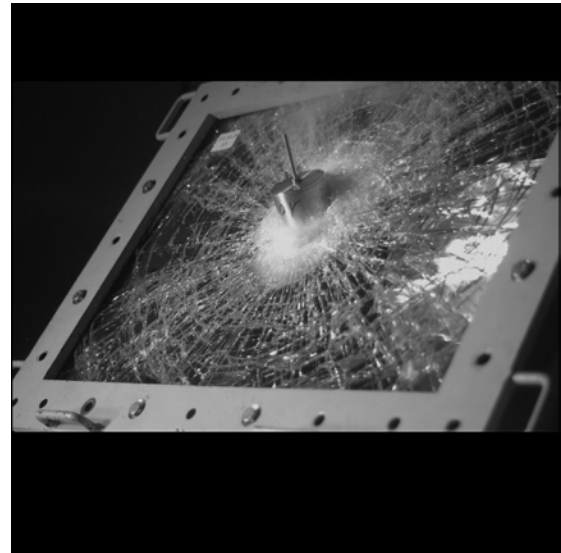
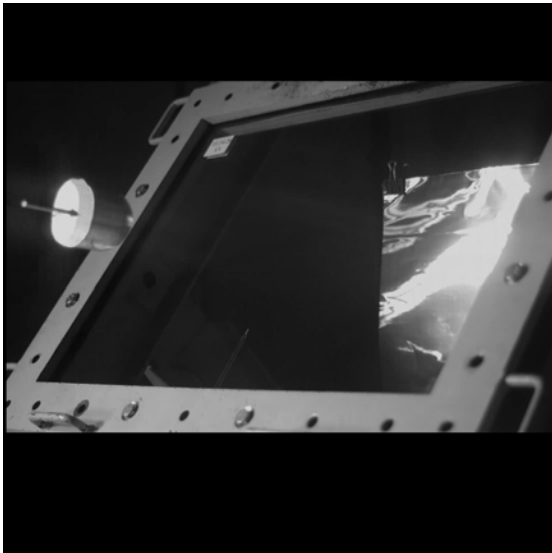
### Did you know?

Anti-spall function is more and more required by norms for railway and by customer to prevent drivers from any injuries in case of front impact.

The capability for a windshield to fulfill this requirement is assessed during the impact test by placing a 500x500mm aluminum sheet behind the windows. This sheet shall be free of mark after impact, ensuring thus the driver's safety.

- ✔ For > 100km/h vehicles
- ✔ For HST, Inter-city, Regio, Loco and metro
- ✔ Windshield application
- ✔ Flat and bent glass

## Anti-Spall Photo Library



**Looking for personalized information?**

Our team is at your service to support you through every step of your project

**Contact Us**

## A solution for every project:



**Safety**



**Green &  
Sustainable**



**Driver & Passenger  
Experience**